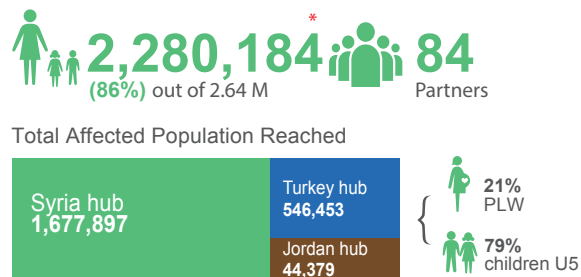
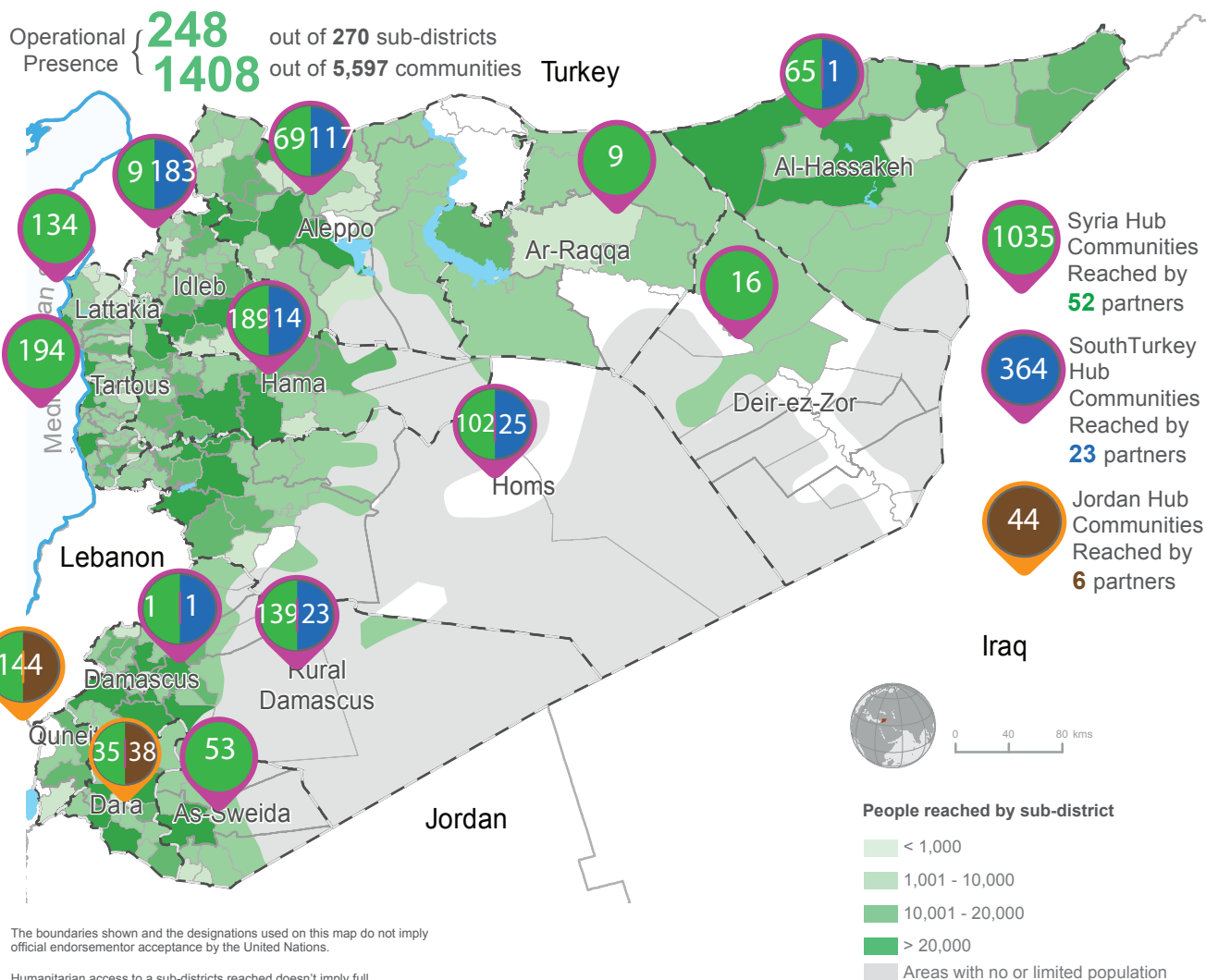


The nutrition sector reached 2,280,184 children under five years and pregnant and lactating women (PLW) in need from January to August of 2017 with curative and preventative nutrition services. This includes 1,097,332 children under five and PLW screened for acute malnutrition. 20,424 children under 5 years and 4,794 PLW were identified with acute malnutrition and treated. Additionally, 1,656,701 children under five and 135,248 PLW received micronutrient supplementation and 637,654 PLW were counselled on infant and young child feeding (IYCF). 3,612 health facility staff have been trained on community based management of acute malnutrition (CMAM) and IYCF counselling



\* Vit A not included in the total reached

## AFFECTED POPULATION REACHED AT SUB-DISTRICT LEVEL JAN-AUG 2017



The boundaries shown and the designations used on this map do not imply official endorsement or acceptance by the United Nations.

Humanitarian access to a sub-districts reached doesn't imply full geographical coverage of all the need in the sub-district

## WOS KEY SECTOR HIGHLIGHTS

As part of the WoS nutrition architecture, all hub nutrition coordinators participated in a three day face-to-face WoS team meeting with the participation of sub-national focal points from Aleppo, Tartous, Qamishli and Homs.

The sector actively participated in the Integrated Food Security Phase Classification (IPC) exercise in collaboration with Food Security Sector in Turkey, Damascus and Jordan. The exercise comprised a 4 day training and 5 day analysis to classify areas. A total of 9 members of the nutrition sector participated in this exercise across the hubs.

The Syria nutrition sector through the Qamsihli sub-sector has continued to support IDPs from Ar Raqqa and Deir-e-zor with preventive nutrition services while establishing nutrition treatment centres. The sub-sector carried out numerous screening events assessing the nutritional status of children. Based on the evolving situation in Deir-e-zor, the sector with key partners put together a nutrition response with essential lifesaving preventive and curative nutrition supplies that are ready to be deployed to support children and women in need. Towards the end of September an inter-agency convoy (36 trucks with nutrition supplies included) reached Deir-e-zor.

The Turkey hub in Gaziantep has continued to support IDPs from Oqierbat, Arsal and Alraqa with preventive nutrition services while establishing new nutrition treatment centres.

During this quarter three nutrition surveys were completed using the SMART methodology. Two barrier analyses of infant and young child feeding and maternal nutrition behaviors in parts of Northern and Southern Syria were completed. A nutrition surveillance system launched in June 2017 from the Turkey hub, released their results for July and August with 83 health facilities reporting from seven governorates. A joint nutrition assessment was completed in previously inaccessible areas of eastern rural Aleppo.

Seven new nutrition treatment services (CMAM) have been opened, four in Dar'a Governorate and one each in the Al Hole, Areesha and Ein Issa camps of NE Syria.

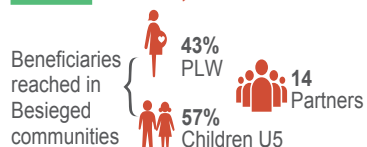
## CHALLENGES

**ACCESS** continues to be a challenge across all hubs in this quarter. In September 2017, there was a security incident close to partner activities in Idleb and nutritional activities were temporarily suspended. The sector is still facing difficulties in providing a comprehensive nutrition response to IDPs in Ar Raqqa while reaching Deir-e-zor remains a great challenge. Delivery of inter-agency convoys (particularly cross-line into besieged and hard to reach areas) has slowed down in this quarter. The situation in eastern rural Aleppo is of particular concern as there is no access to nutrition services for both prevention and treatment. A rapid needs assessment indicated signs of chronic malnutrition among children and cases of acute malnutrition cases among children and PLWs.

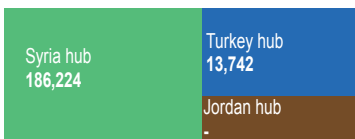
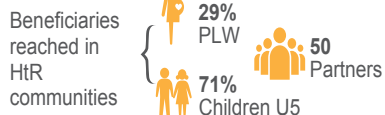
**LIMITED** funding continues to affect the sector in sustaining and scaling up the current nutrition response.

## AFFECTED POPULATION REACHED IN BESIEGED AND HARD TO REACH COMMUNITIES JAN - AUG 2017

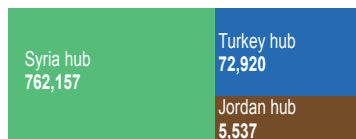
**199,966**



**846,928**



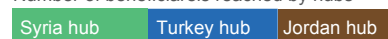
**21** out of 33 Communities reached



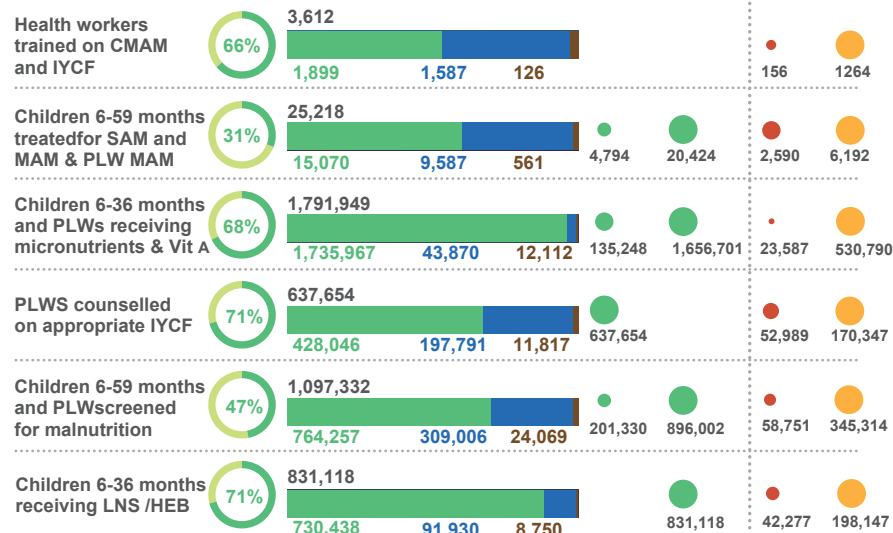
**285** out of 2,556 Communities reached

## PROGRESS AGAINST PMR INDICATORS JAN - AUG 2017

Number of beneficiaries reached by hubs



PLW CU5 BSG HTR



## RESPONSE PLANS AND ACTIVITIES:

The sector continues to provide essential lifesaving nutrition services to vulnerable children and women across many parts of the country with concentrated support for IDPs in Raqqqa, Hassakeh, Idleb, Rural Hama, Dar'a and Qunietra. Efforts are underway to respond to nutritional needs of women and children in Deir-e-zor as the areas become accessible. Community nutrition efforts continue to respond to the nutritional needs of women and children through preventive nutrition services which include MUAC screening and micronutrients supplementation for children under five and PLW. In addition, PLW are supported to practice IYCF practices with nutrition cluster partners launching a third round of the IYCF campaign in 200 communities of northern Syria. CMAM centers continue to provide curative nutrition services and include the admission of malnutrition cases and necessary treatment for girls and boys under five and PLW. Below are a few of the new activities that have launched during this quarter.

### ESSENTIAL LIFESAVING NUTRITION SERVICES TO NEWLY DISPLACED IDPS IN NORTHERN SYRIA - IDLEB GOVERNORATE AND RURAL HAMA

Since August and September of 2017 a total of 23,319 individuals have been displaced to Idleb Governorate and rural Hama from Arsal and Oqeirbat. Nutrition partners mobilized rapid response teams of community health workers to Emergency Transient and Reception Centers where these IDPs had settled in order to initiate and scale up curative and preventative nutrition services via mobile clinics.

### JOINT NUTRITION ASSESSMENT – EASTERN RURAL ALEPPO

A joint nutrition assessment was completed in formerly inaccessible areas of eastern rural Aleppo. The initial results of the MUAC screening indicated that mothers had a high rate of acute malnutrition while young children had acceptable rates of acute malnutrition. Most mothers cited that they reduced the number of meals taken and minimized portions of food in both quality and quantity in order to save it for their children. Very poor practices of IYCF practices were also observed.

### BARRIER ANALYSIS SURVEY

The Turkey hub conducted a barrier analysis that included a TOT training for 5 partners from the 31st of June to the 1st of July. The barrier analysis survey was conducted in Rural Aleppo and Idleb Governorates from July 8 - 13. The Jordan hub launched the data collection for their barrier analysis on the 17th of August. This is the first time barrier analysis surveys for IYCF practices have ever been conducted in Syria and final reports will be shared in October.

### SMART SURVEYS

**IDLEB GOVERNORATE** In July 2017, a SMART nutrition survey was conducted in Idleb Governorate indicating a prevalence of global acute malnutrition based on weight-height z-scores at 2.1% (1.0 – 4.1 95% C.I.), a prevalence of GAM based on MUAC measurements at 1.9% (0.8 – 4.6 95% C.I.) and the prevalence of stunting based on height-for-age z-scores is at 14.2% (10.2 – 19.5 95% C.I.).

**AL BAB AREA OF ALEPPO GOVERNORATE** In August 2017, a SMART nutrition survey in Al Bab was conducted and the final data sets have now been shared with the CDC for validation.

**LAJAT AREA OF DAR'A GOVERNORATE** In August 2017, a SMART survey was completed and finalized in the Lajat area (35 communities of Izra' and As-sanamayn) of Dar'a Governorate indicating a prevalence of global acute malnutrition based on weight-height z-scores at 7.8% (5.6 – 10.9 95% C.I.), GAM measured via MUAC at 5.5% (3.5 – 8.5 95% C.I.) and the prevalence of stunting based on height-for-age z-scores is at 27.5% (23.0 – 32.4 95% C.I.).

### NUTRITION SURVEILLANCE – TURKEY HUB

Nutrition surveillance data with MUAC measurement began in July 2017 via sentinel sites in health facilities. The August 2017 data for the seven health facilities in three sub-districts of Ar Raqqqa Governorate (Suluk, Ein Issa and Tell Abyiad Sub-Districts) accessible from 135 communities alerted us to a possible deterioration of the nutritional situation in Ein Issa and a poor nutritional situation in Tell Abyiad. Accordingly, the sector is working to investigate further and address this situation.

## UPCOMING EVENTS INCLUDING ASSESSMENTS

- Cluster coordinator training in Istanbul on October 23- 27.
- CMAM and IYCF-E remote training for sector partners staff in southern Syria.
- Nutrition surveillance (MUAC, weight and height) will begin in the next quarter in southern Syria.
- IYCF-E training will be offered in Sudan for Syria sector partners and the sector coordination team.